

LABORATORY DESIGN IS AN EXACT SCIENCE.  
USE OUR EXPERIENCE TO YOUR ADVANTAGE.

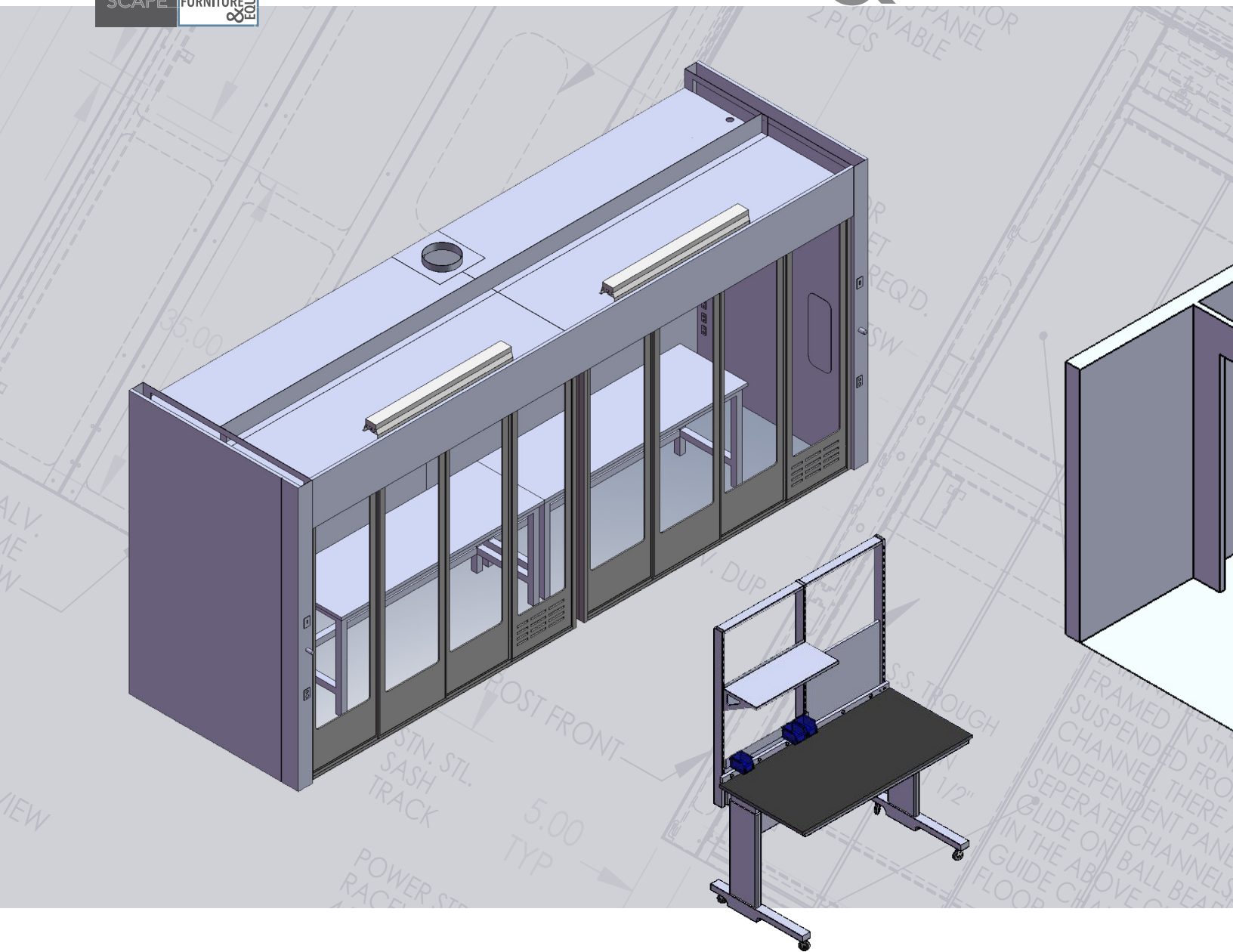
LABORATORY SOLUTIONS

# FURNITURE & EQUIPMENT



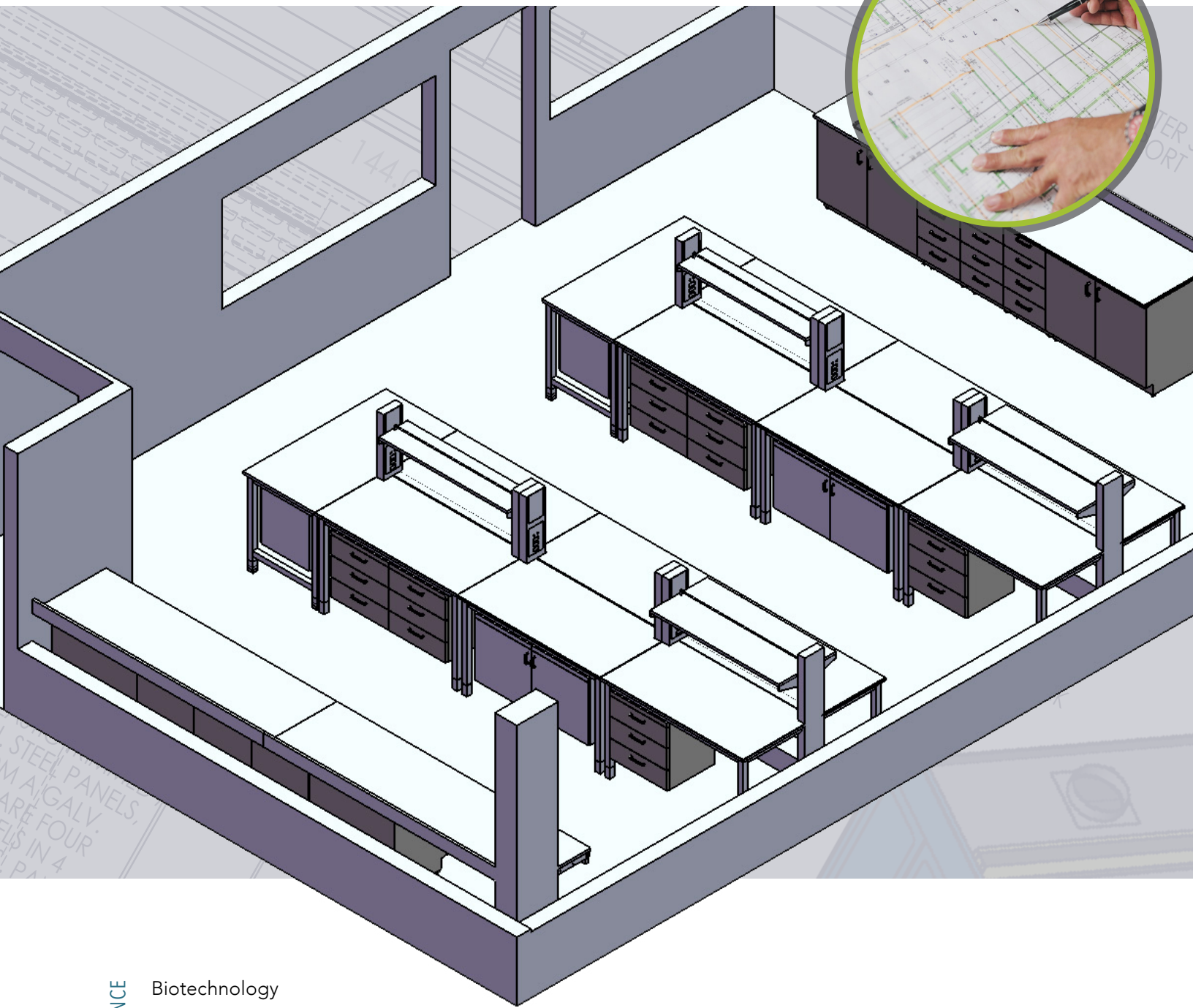
Flexible Workspace Planning & Design  
High Performance Furniture & Equipment  
Delivery & Expert Installation

[WWW.LABSCAPE.COM](http://WWW.LABSCAPE.COM)



# WORKSPACE SOLUTIONS

Whether building and furnishing a bioscience lab or renovating a forensics facility, Labscape guarantees that your workspace will exceed your expectations on every level.



APPLICATIONS & INDUSTRIES OF EXPERIENCE

- Biotechnology
- Chemical
- Commercial
- Energy
- Food
- Fragrance
- Healthcare
- Higher Education
- Pharmaceutical
- Research & Development

Use our experience to your advantage.

All laboratories are complex, sophisticated and expensive workspaces. A carefully planned laboratory is configured with industry specific equipment to meet the precise requirements that that particular field demands.

At Labscape we assume single source responsibility for a functional & efficient laboratory in any industry or application. We commit ourselves to a level of unsurpassed service at every stage of the construction process, from planning and safety through equipment delivery & proper installation.

[WWW.LABSCAPE.COM](http://WWW.LABSCAPE.COM)

## FUME HOODS

A FUME HOOD IS AN IMPORTANT PIECE OF TECHNICAL EQUIPMENT IN ANY LABORATORY SETTING AND SHOULD BE CHOSEN VERY CAREFULLY.

At Labscape, we have the expertise to plan, build and install the safest, most efficient fume hood system best suited to your specific laboratory needs. Determining the most suitable fume hood system(s) for your laboratory workspace requires knowledge of the intended laboratory procedures, applications and chemicals to be used.

When choosing the proper fume hood system we always consider the following factors: *Fume Hood Efficiency, Supply & Exhaust Balance, Duct & Blower Capacity, Air Movement Characteristics, System Limitations & Potential Pollution Issues.*



LABSCAPE FUME HOOD SYSTEMS  
Walk-In // Air Foil // Double-Sided // Perchloric Acid // Radioisotope



# CASEWORK



# FURNITURE & EQUIPMENT

## LABSCAPE CASEWORK FINISHES

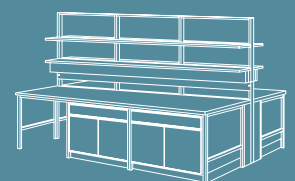
Metal // Wood // Plastic Laminate

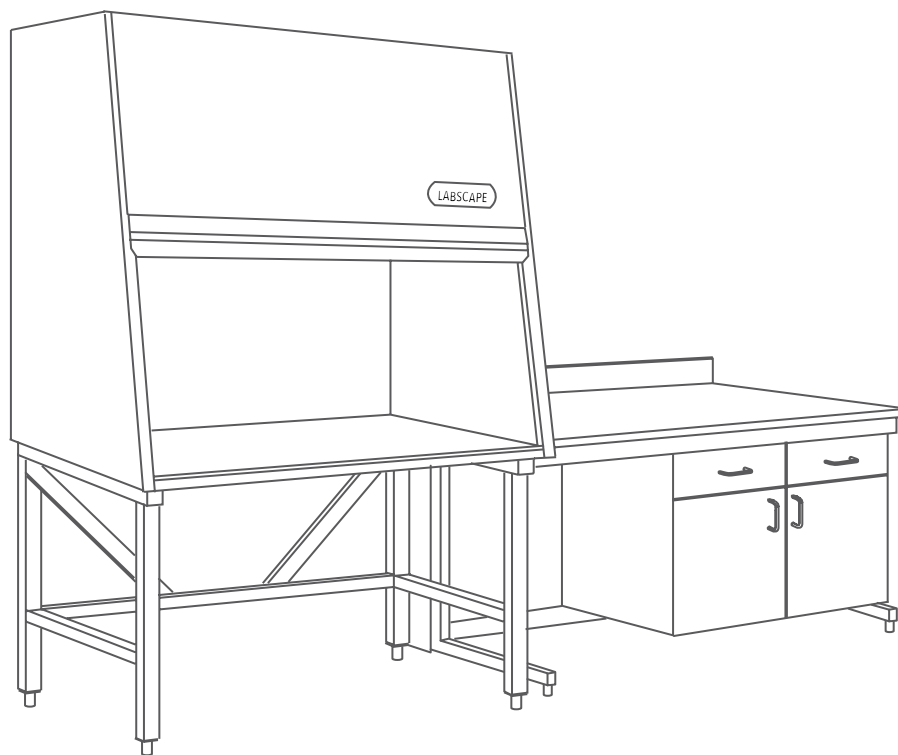


METAL MODULAR CASEWORK OFFERS THE CONVENIENCE OF FLEXIBILITY FOR FREQUENT-USE LABS & THE DURABILITY TO SAFELY WITHSTAND CHEMICALS USED IN MOST LABORATORY APPLICATIONS.

Like fixed metal casework, modular casework stands up to a broad range of applications.

Due to its movable nature, it allows laboratories to quickly react to changing needs. When your lab space needs to be improved or reconfigured, modular metal casework can be easily and efficiently moved without time-consuming and costly demolition. Whether you are seeking furniture options for a Research Center, Medical Facility or a University Science Lab, metal modular casework is a cost-effective, flexible solution that'll satisfy the requirements of most high performance laboratories.





If you have laboratory questions, we can help.  
Connect with a Labscape representative today.

CALL // 800.898.6649 EMAIL // [info@labscape.com](mailto:info@labscape.com)